



# Possessive Apostrophes

I know when I need to use an apostrophe to show possession.

I can use possessive apostrophes correctly.

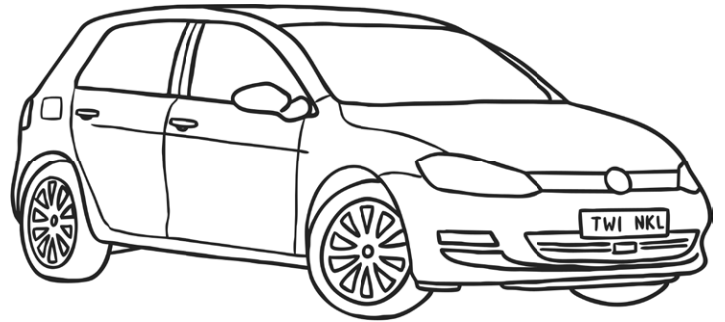


1. Rewrite each sentence below so it includes an apostrophe to show possession.  
The first one has been done for you.

- a) Conor is looking at the bike which belongs to Isla.

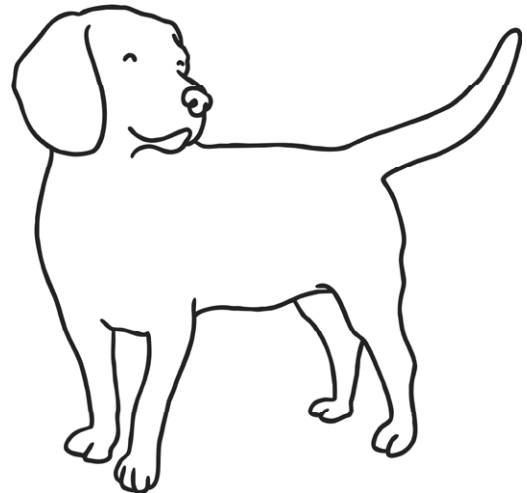
*Conor is looking at Isla's bike.*

- b) The coat which belongs to Martin is hanging up in the hall.



- c) The car that belongs to Laiba is the fastest car.

- d) We all like playing with the dog that belongs to Lok.



- e) The kittens which belong to Jack are very cute.



# Possessive Apostrophes

I know when I need to use an apostrophe to show possession.

I can use possessive apostrophes correctly.



1. Rewrite each sentence below so it includes an apostrophe to show possession.  
The first one has been done for you.

a) Conor is looking at the bike which belongs to Isla.

*Conor is looking at Isla's bike.*

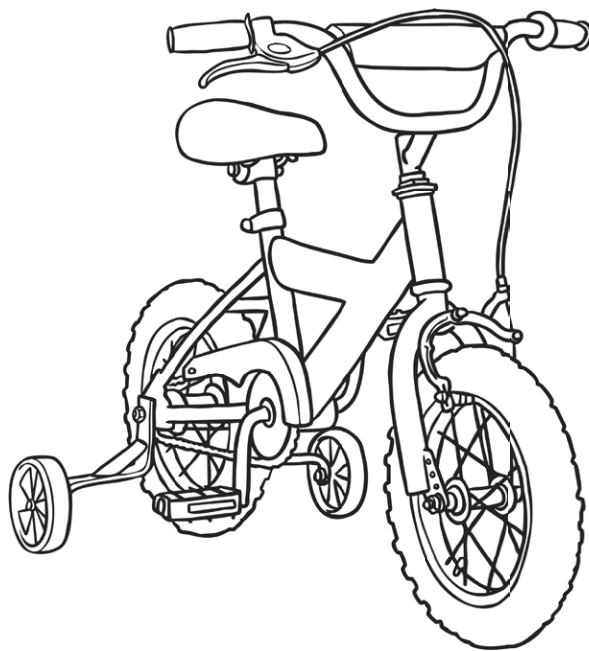
---

b) The long, warm coat which belongs to Martin is hanging up in the hall.

---

c) These are the parents that belong to Lucy.

---





# Possessive Apostrophes

2. Look at the pictures. Can you write a sentence to describe each using an apostrophe to show possession? The first one has been done for you.

a)



Rachel

*This is Rachel's toy train.*

---

---

b)

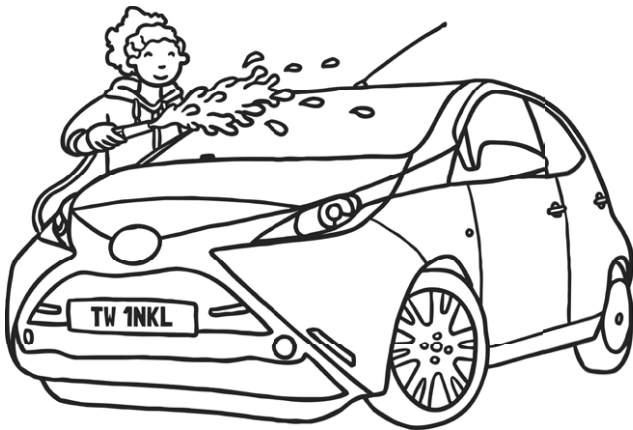


Sophia

---

---

c)

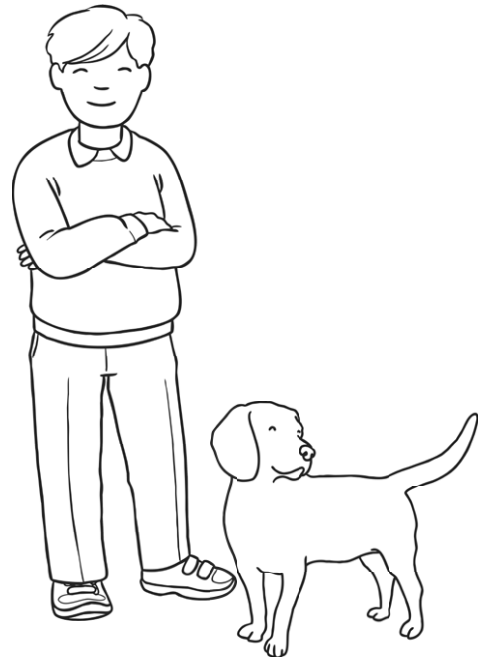


Laiba

---

---

d)



Lok

---

---



# Possessive Apostrophes

I know when I need to use an apostrophe to show possession.

I can use possessive apostrophes correctly.



1. Rewrite each sentence below so it includes an apostrophe to show possession.  
The first one has been done for you.

a) Conor is looking at the bike which belongs to Isla.

*Conor is looking at Isla's bike.*

---

b) The long, warm coat which belongs to Martin is hanging up in the hall.

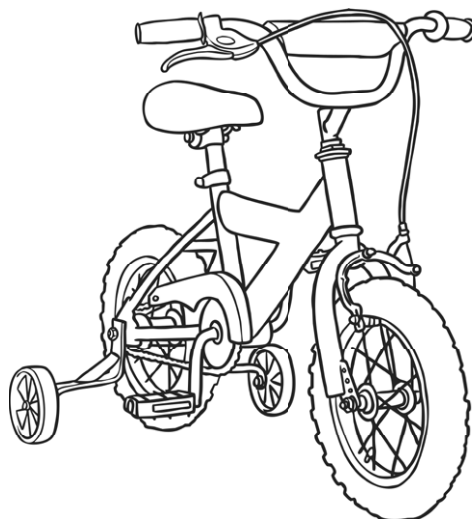
---

c) These are the parents that belong to Lucy.

---

d) The wheels that belong to the car splashed through the puddles on the road.

---





# Possessive Apostrophes

2. Look at the pictures. Can you write a sentence to describe each using an apostrophe to show possession? The first one has been done for you.

a)



Rachel

*This is Rachel's toy train.*

---

---

b)

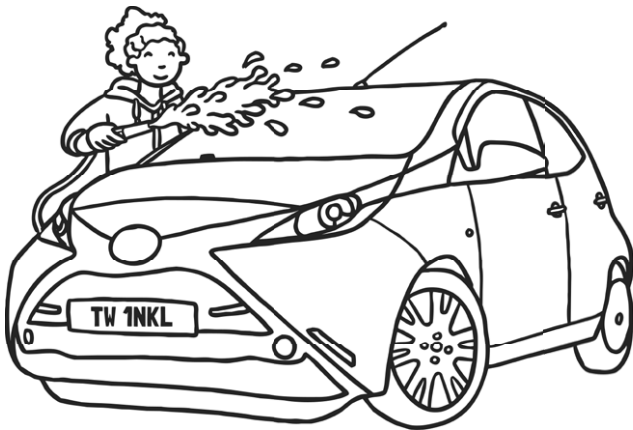


Sophia

---

---

c)

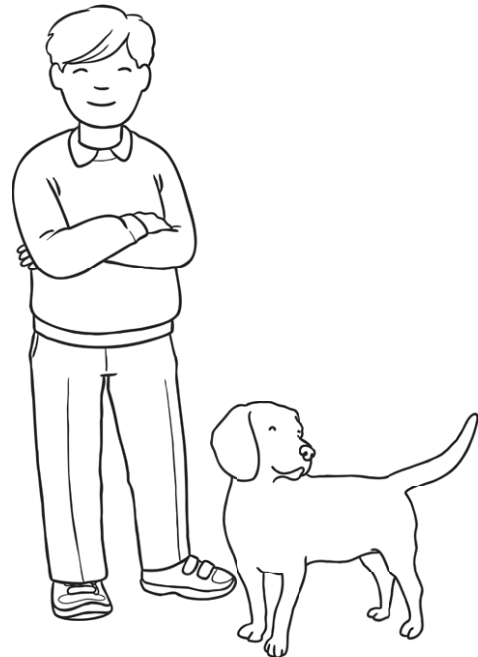


Laiba

---

---

d)



Lok

---

---

★ 1. Rewrite each sentence below so it includes an apostrophe to show possession. The first one has been done for you.

- a) Conor is looking at the bike which belongs to Isla.  
*Conor is looking at Isla's bike.*
- b) The coat which belongs to Martin is hanging up in the hall.  
*Martin's coat is hanging up in the hall.*
- c) The car that belongs to Laiba is the fastest car.  
*Laiba's is the fastest car.*
- d) We all like playing with the dog that belongs to Lok.  
*We all like playing with Lok's dog.*
- e) The kittens which belong to Jack are very cute.  
*Jack's kittens are very cute.*

★★ 1. Rewrite each sentence below so it includes an apostrophe to show possession. The first one has been done for you.

- a) Conor is looking at the bike which belongs to Isla.  
*Conor is looking at Isla's bike.*
- b) The long, warm coat which belongs to Martin is hanging up in the hall.  
*Martin's long, warm coat is hanging up in the hall.*
- c) These are the parents that belong to Lucy.  
*These are Lucy's parents.*

2. Look at the pictures. Can you write a sentence to describe each using an apostrophe to show possession? The first one has been done for you.

The children may have variations of the answers. Ensure the apostrophe is used correctly.

- a) *This is Rachel's toy train.*
- b) *This is Sophia's teddy bear.*
- c) *This is Laiba's car.*
- d) *This is Lok's dog.*



1. Rewrite each sentence below so it includes an apostrophe to show possession. The first one has been done for you.

a) Conor is looking at the bike which belongs to Isla.

*Conor is looking at Isla's bike.*

b) The long, warm coat which belongs to Martin is hanging up in the hall.

*Martin's long, warm coat is hanging up in the hall.*

c) These are the parents that belong to Lucy.

*These are Lucy's parents.*

d) The wheels that belong to the car splashed through the puddles on the road.

*The car's wheels splashed through the puddles on the road.*

2. Look at the pictures. Can you write a sentence to describe each using an apostrophe to show possession?

The children may have variations of the answers. Ensure the apostrophe is used correctly.

a) *This is Rachel's toy train.*

b) *This is Sophia's teddy bear.*

c) *This is Laiba's car.*

d) *This is Lok's dog.*